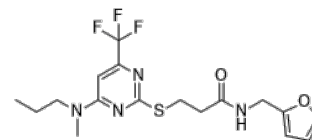


Product Name : TRPV2 antagonist SET2
Cat. No. : PC-22170
CAS No. : 2313525-20-9
Molecular Formula : C₁₇H₂₁F₃N₄O₂S
Molecular Weight : 402.44
Target : TRP Channel
Solubility : 10 mM in DMSO



CAS: 2313525-20-9

Biological Activity

SET2 is a potent, subtype-selective inhibitor of transient receptor potential vanilloid type 2 (TRPV2) with IC₅₀ of 0.46 μM. SET2 displays no activity against TRPV1, TRPV3, or TRPV4. SET2 (0-20 μM) inhibits the migration of prostate cancer cell PC-3M expressing TRPV2.

References

Hao Chai, et al. J Med Chem. 2019 Feb 14;62(3):1373-1384.

Caution: Product has not been fully validated for medical applications. Lab Use Only!

E-mail: tech@probechem.com